

## Features

- ▣▣▣▣ Ideally suited for wearable applications
- ▣▣▣▣ Supply voltages from 1.8V ~ 3.6V
- ▣▣▣▣ Low power consumption
- ▣▣▣▣ Miniature SM package
- ▣▣▣▣ Excellent frequency stability

## Specifications

**GTXO-203T:** TCXO, no frequency adjustment

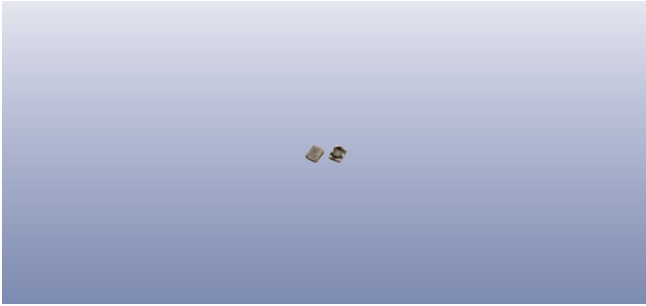
**GTXO-203V:** TCXO with VC frequency adjustment

Parameters	Variant		Option Codes
	T	V	
<b>Frequency range:</b> 26.0 ~ 52.0MHz	■	■	
<b>Frequency stability:</b>			
±2.5ppm	■	■	J
±2.0ppm	□	□	H
±1.5ppm	□	□	G
±0.5ppm	□	□	E
<b>Temperature range:</b>			
0 to +50°C	□	□	R
-10 to +60°C	□	□	C
-20 to +75°C	□	□	N
-30 to +85°C	■	■	S
<b>Storage temperature range:</b>			
-40 to +85°C	■	■	
<b>Supply voltage stability:</b>			
±0.2ppm, V <sub>DD</sub> ±5%	■	■	
<b>Load stability:</b>			
±0.2ppm, Z <sub>L</sub> ±10%	■	■	
<b>Ageing:</b>			
±1.0ppm max first year	■	■	
<b>Supply voltage (V<sub>DD</sub>):</b>			
+1.8V	■	■	specify
Other (+1.8V ~ +3.6V)	□	□	
<b>Supply current:</b>			
1.5~2.0mA max	■	■	
<b>Output waveform:</b>			
Clipped sine, 0.8V p-p, +DC offset	■	■	
<b>Test load (Z<sub>L</sub>):</b>			
10kΩ // 10pF	■	■	
<b>Start up time:</b>			
3ms max	■	■	
<b>Frequency adjustment:</b>			
None	■	■	
±5 ~ ±14ppm, +1.4V ±1.0V		■	
<b>Harmonics:</b>			
-5dBc max	■	■	
<b>Phase noise:</b>			
-130dBc/Hz @ 1kHz	■	■	
<b>Frequency tolerance @ 25°C:</b>			
±2.0ppm max, 60mins after reflow	■	■	

■ Standard. □ Optional - Please specify required code(s) when ordering

## Ordering Information

Product name + variant + option codes + frequency  
 Option codes must be included to properly specify a model.  
 eg: **GTXO-203V/JS 38.40MHz** ±2.5ppm -30+85°C, TCXO with VC  
**GTXO-203T/HN 26.0MHz** ±2.0ppm -20+75°C, TCXO no VC  
 Option code X (eg GTXO-203V/X) denotes a custom spec.



## Packaging & Handling

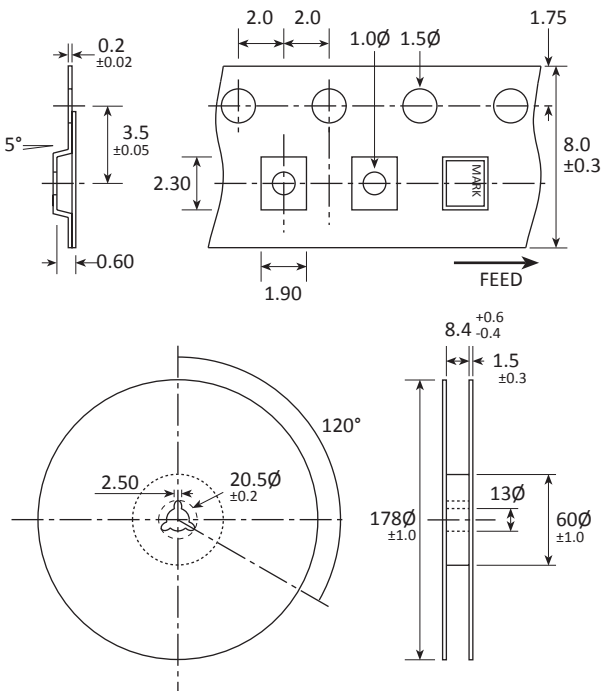
Production quantities supplied on T&R, 2k pcs per reel.  
Small quantities may be supplied on tape (no reel), or in bulk.

 Static sensitive product. Observe proper handling precautions

## Marking

DC LC • FREQUENCY	<ul style="list-style-type: none"> <li>Pin 1</li> <li>Marking type: Laser</li> <li>DC = Date code . LC = Lot codes</li> </ul>
----------------------	---

## Tape & Reel Specification





Not to scale. Dimensions in mm. Tolerances ±0.1mm unless otherwise stated

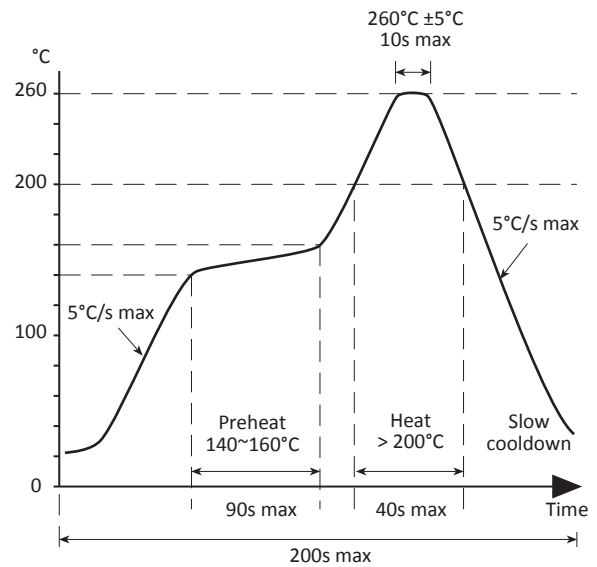
## Construction

- ▮ Ceramic body with gold-plated pads
- ▮ Metal lid, seam sealed

## Composition

 This product is lead-free, and is fully compliant with current RoHS directives 

## Soldering Profile



Solder resistance: 260°C x 10 secs x 2.