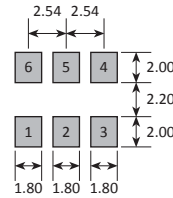


SOLDER PAD LAYOUT



TOP VIEW

PAD	CONNECTION
1	Control voltage
2	Enable / disable
3	Ground
4	Output 1 (Q)
5	Output 2 (\bar{Q})
6	Supply

Features

- ▮ Frequencies up to 800MHz
- ▮ Complementary LVDS outputs
- ▮ Fast rise / fall times
- ▮ Enable / disable tristate function

Enable / Disable Function

Input (pad 2) *	Output 1 (pad 4)	Output 2 (pad 5)
Open	Active	Active
'1' level V_{IH}	High Z	High Z
'0' level V_{IL}	Active	Active

* Note: '0' level = $V_{IL} \leq 1.70V$, '1' level = $V_{IH} \geq 2.20V$

Specifications

Parameters	Product	Option Codes
	GVXO-52	
Frequency range:	12.0 ~ 800MHz	■
Voltage control (V_{CTL}):	+1.65V $\pm 1.50V$, 10% linearity	■
Frequency pullability (min):	$\pm 150ppm$ Other	■ □ specify
Frequency stability*:	$\pm 50ppm$ $\pm 25ppm$ Other	■ □ □ specify
Operating temperature range:	-10 to +70°C -40 to +85°C	■ □ I
Storage temperature range:	-40 to +85°C	■
Supply voltage (V_{DD}):	+3.3V ($\pm 5\%$)	■
Supply current:	65mA max ($\leq 100MHz$) 120mA max ($> 100 \sim 800MHz$)	■ ■
Output:	LVDS	■
Offset voltage:	1.25V typ	■
Differential output voltage:	0.33V typ	■
Output load:	100Ω	■
Logic levels:	'0' level = +1.7V max '1' level = +2.2V min	■ ■
Waveform symmetry:	40:60 max @ 50% V_{p-p}	■
Rise / fall time:	1.0ns max (20% ~ 80% V_{p-p})	■
Phase jitter:	5ps max (12kHz~20MHz)	■

■ Standard. □ Optional - Please specify required code(s) when ordering

* Frequency stability is inclusive of operating temperature range, supply voltage change and ageing, with $V_{CTL} = +1.65V$

Ordering Information

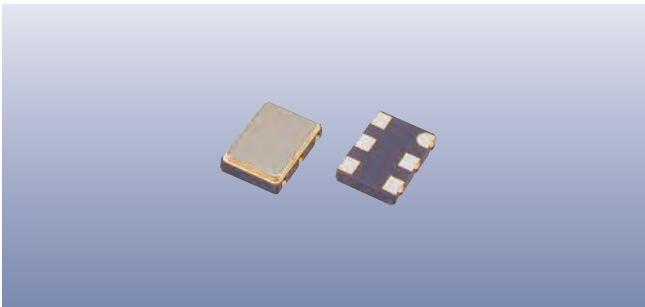
Product + option codes + frequency

eg: **GVXO-52/C 155.520MHz** $\pm 25ppm$ stability -10+70°C

GVXO-52/BI 77.760MHz $\pm 50ppm$ stability -40+85°C

Option codes must be included to specify a model completely.

Option code X (eg GVXO-52/X) denotes a custom spec.



Construction

- ▮ Ceramic body with gold-plated pads
- ▮ Metal lid, seam sealed

Composition



This product is lead-free, and is fully compliant with the RoHS 2 directive 2011/65/EU



Packaging & Handling

Production quantities supplied on T&R, 2k pcs per reel.
Small quantities may be supplied on tape (no reel), or in bulk.



◆ Static sensitive product. Observe proper handling precautions

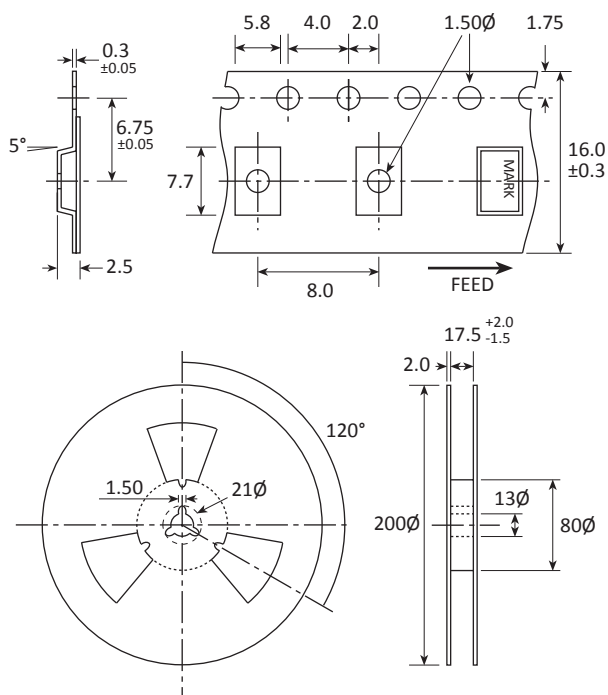
Marking

GOLLEDGE
FREQUENCY
PARTNO DC

- Pin 1
- Marking type: Laser
- DC = Date code in YM, eg "FE" = May 2016

	A	B	C	D	E	F	G	H	J	K	L	M
Y	1	2	3	4	5	6	7	8	9	0		
M	Jan	Feb	Mar	Apr	May	Jun	Jul	Aug	Sep	Oct	Nov	Dec

Tape & Reel Specification



Not to scale. Dimensions in mm. Tolerances ±0.1mm unless otherwise stated

Soldering Profile

