

Features

- ▶ Low current consumption
- ▶ Choice of supply voltages
- ▶ Miniature ceramic package with metal lid
- ▶ Competitive pricing

Specifications

- GVXO-331G: 1.8V supply
- GVXO-331K: 2.8V supply
- GVXO-331L: 3.3V supply

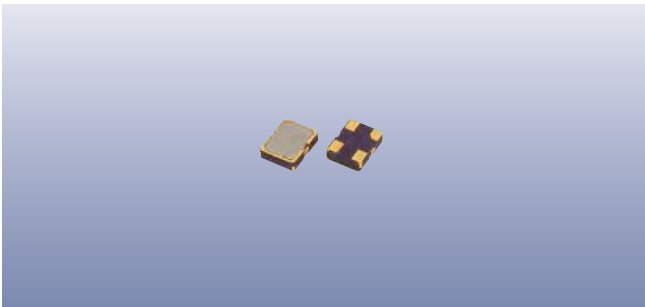
| Parameters | Variant | | | Option Codes |
|--|---------|---|---|-------------------|
| | G | K | L | |
| Frequency range: 1.50 ~ 64.440MHz | ■ | ■ | ■ | |
| Voltage control: +0.9V ±0.9V, 10% linearity +1.4V ±1.4V, 10% linearity +1.65V ±1.65V, 10% linearity | ■ | ■ | ■ | |
| Frequency pullability (min): ±80ppm ±90ppm Other | ■ | ■ | ■ | specify |
| Frequency stability*: ±50ppm ±30ppm Other | ■ | ■ | ■ | B C specify |
| Operating temperature range: -20 to +70°C -40 to +85°C | ■ | ■ | ■ | I |
| Storage temperature range: -40 to +85°C | ■ | ■ | ■ | |
| Supply voltage (V _{DD}): +1.8V (±10%) +2.8V (±10%) +3.3V (±10%) | ■ | ■ | ■ | |
| Supply current: 3mA max 9mA max 13mA max | ■ | ■ | ■ | |
| Driving ability: 15pF CMOS | ■ | ■ | ■ | |
| Logic levels: '0' level = 10%V _{DD} max '1' level = 90%V _{DD} min | ■ | ■ | ■ | |
| Waveform symmetry: 40:60 max @ 50%V _{DD} | ■ | ■ | ■ | |
| Rise / fall time (max): 10ns max (1.5 ~ 10.0MHz) 6ns max (10.0 ~ 54.0MHz) | ■ | ■ | ■ | |

■ Standard. □ Optional - Please specify required code(s) when ordering

Ordering Information

Product + variant + option codes + frequency
 eg: **GVXO-331G/C 27.0MHz** 1.8V, ±80ppm pull, ±30ppm stab, -20+70°C
GVXO-331L/BI 54.0MHz 3.3V, ±90ppm pull, ±50ppm stab, -40+85°C
 Option codes must be included to specify a model completely.
 Option code X (eg GVXO-331/X) denotes a custom spec.

◆ Please check availability of ±30ppm stability over -40+85°C before ordering



Packaging & Handling

Production quantities supplied on T&R, 1k or 3k pcs per reel.
Small quantities may be supplied on tape (no reel), or in bulk.

 Static sensitive product. Observe proper handling precautions

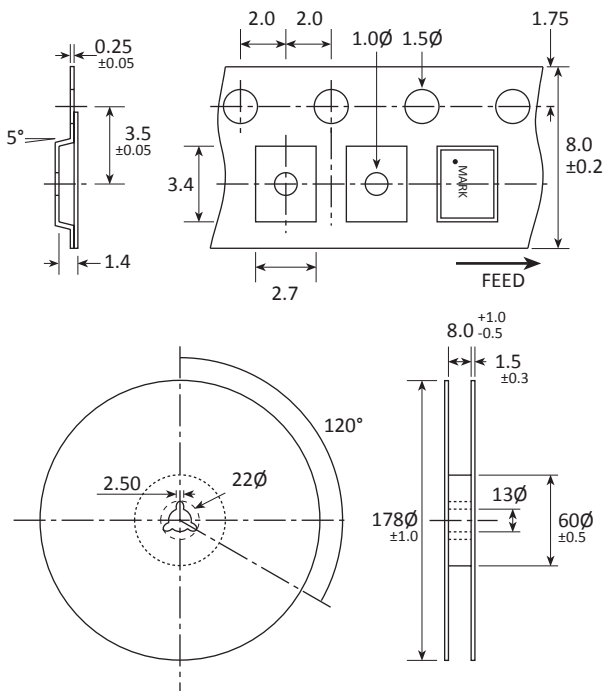
Marking

FREQUENCY
DC

Marking type: Laser
DC = Date code in YM, eg "CE" = May 2013

| | A | B | C | D | E | F | G | H | J | K | L | M |
|---|-----|-----|-----|-----|-----|-----|-----|-----|-----|-----|-----|-----|
| Y | 1 | 2 | 3 | 4 | 5 | 6 | 7 | 8 | 9 | 0 | | |
| M | Jan | Feb | Mar | Apr | May | Jun | Jul | Aug | Sep | Oct | Nov | Dec |

Tape & Reel Specification



Not to scale. Dimensions in mm. Tolerances ±0.1mm unless otherwise stated

Construction

- Ceramic body with gold-plated pads
- Metal lid, seam sealed

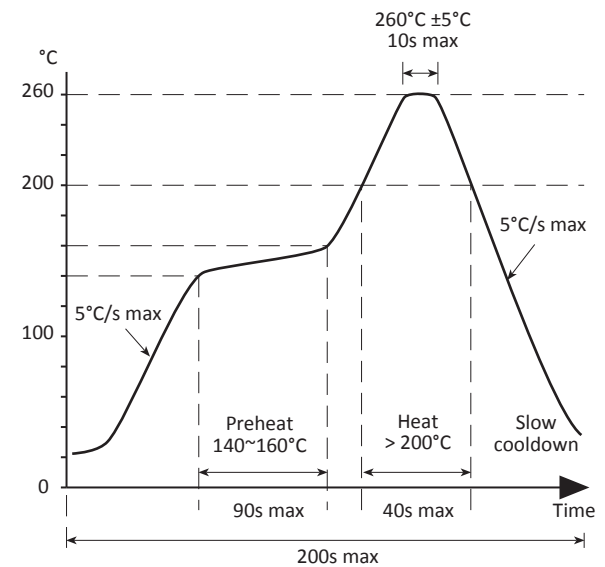
Composition



This product is lead-free, and is fully compliant with the RoHS 2 directive 2011/65/EU



Soldering Profile



Solder resistance: 260°C x 10 secs x 2.